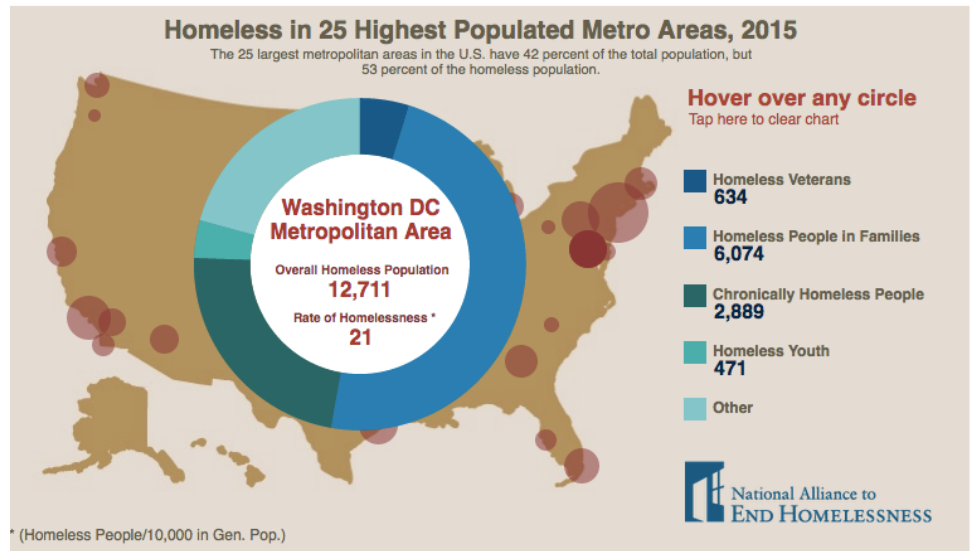


## Good News: Homelessness is a Solvable Problem

Unlike many other human conditions, homelessness is on the verge of being eradicated in several communities. However, Washington, DC has the highest rate of homelessness (more than 1 in 100 people are without a home)<sup>1</sup>. Beyond the District, numbers of homeless families also surged this [2015] winter in the city of Alexandria and in Fairfax, Frederick and Montgomery counties... “The Metropolitan Washington Council of Governments, which released the statistics, said the ‘single greatest barrier to ending homelessness’ in the region was a ‘diminishing number of affordable and available permanent housing opportunities for the lowest-income households.’”<sup>2</sup>

Families who pay more than 30 percent of their income for housing are considered cost burdened and may have difficulty affording necessities such as food, clothing, transportation and medical care. An estimated 12 million renter and homeowner households now pay more than 50 percent of their annual incomes for housing. A family with one full-time worker earning the minimum wage cannot afford the local fair-market rent for a two-bedroom apartment anywhere in the United States. This is even worse in the DMV.



## More Good News: We are Invited to be Part of the Solution

InspireDC’s Affordable Housing Coalition – including churches in the Greater Washington District and other partners – seeks to end homelessness once and for all through purchasing property (and keeping it affordable) and through leveraging existing church property for affordable housing. Housing First<sup>3</sup> approaches are demonstrating that solving homelessness can help fix a lot of other problems too (e.g., truancy from schools, food insecurity, drug and alcohol abuse, and unemployment). People who are coming to your food pantry would likely benefit greatly from affordable housing.

Thanks to our network of partnerships (who manage the properties and provide case management and supportive services), we can house a person for \$43 per day. Thirty people making contributions of \$43/month (less than a cup of coffee per day) can house a single person for a year.

## How Many People Can You, Your Friends and Your Church Help House?

With 100% participation from churches and the generosity of members and friends we can do our part to end homelessness and contribute to human flourishing in the Greater Washington District. The more affordable housing we create, the more each dollar stretches, and the more lives can be transformed.

<sup>1</sup> The “Hunger and Homelessness” survey from the U.S. Conference of Mayors found that D.C. has 124.2 homeless people for every 10,000 residents in the general population, making it the highest rate of homelessness. The city also had one of the fastest increases in homelessness between 2009 and 2016, with a 34.1 percent gain. The number of homeless people in families in the District also surged by 103.54 percent between those years, the survey found.

<sup>2</sup> [https://www.washingtonpost.com/local/dc-politics/the-dc-region-has-11623-homeless-people-but-thats-not-the-whole-story/2015/05/13/41997f50-f984-11e4-9ef4-1bb7ce3b3fb7\\_story.html?utm\\_term=.4320005b4275](https://www.washingtonpost.com/local/dc-politics/the-dc-region-has-11623-homeless-people-but-thats-not-the-whole-story/2015/05/13/41997f50-f984-11e4-9ef4-1bb7ce3b3fb7_story.html?utm_term=.4320005b4275)

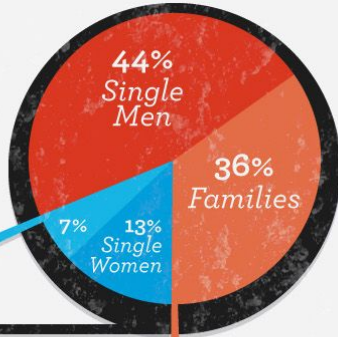
<sup>3</sup> Learn about more about why Housing First works <https://www.youtube.com/watch?v=pwdq2VWavtc>.



# THE STATS ON THE HOMELESS

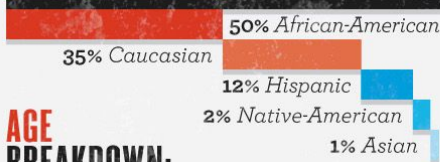
OF THE 2 MILLION HOMELESS:

Every year, an estimated 2 million or more people spend time homeless, or houseless, in America. With added economic hardships and the continuing recession, these figures are most likely a conservative estimate. You might think of homeless people as uneducated, drug-addicted, dirty, unstable people who are just too lazy or crazy to have a job, but that's only a small fraction of the millions of Americans who are without a home. Let's learn who the homeless really are.

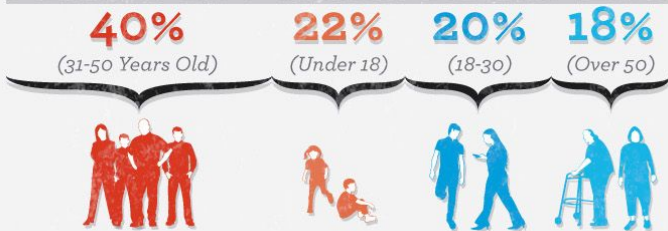


Families are the fastest growing segment of the homeless population.

## RACIAL BREAKDOWN:



## AGE BREAKDOWN:

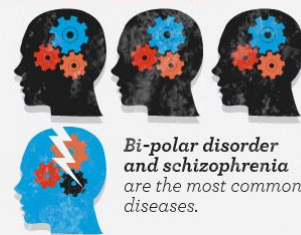


OF THE HOMELESS MALES, 40% SERVED THEIR COUNTRY IN THE ARMED FORCES.



60% served more than 3 years.

OF THE SINGLE, ADULT HOMELESS POPULATION, 25% ARE SUFFERING FROM A MENTAL ILLNESS.



Why should our church participate in this when we are involved in ministry with the poor and missional projects already?

We affirm that each church and individual must discern God's will and call. The reasons we would give for your consideration include: a. housing is a hand-up not a hand-out and is the basis of helping people get out of poverty in a world with an increasing have-have not gap; b. working together, across our district, allows us to have greater impact in areas of highest need; and c. if we don't secure affordable housing while it is still available, who will?

What is Greater Washington District's Goal?

Our goal is simple: 100% of the churches, campus ministries and new church starts are participating in this effort monthly or annually through 2020. Whether you or your congregation can house 1 person for one day a month (\$43/month for 36 months) or for a whole year (\$1,290/month for 36 months), every donation counts toward this goal.

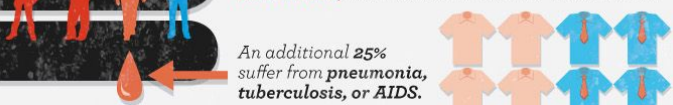
What Are the District's Priorities?

To purchase at least one home in honor of Adrienne Terry for a family by the end of the year and to leverage as much church property as possible. We would like to have at least one Adrienne Terry Home in each county in our district by 2020.

Where Can I Donate?

The easiest way to donate is online at <http://tinyurl.com/GWDistrictChallenge> or by automatic withdrawals. If you prefer to write a check, make them payable to "InspireDC: AHC" with Adrienne Terry Fund in the memo field and mail to: InspireDC, 1459 Columbia Road, NW, Washington, DC 20009.

HALF OF THE HOMELESS ARE AFFLICTED WITH DIABETES, HIGH BLOOD PRESSURE, CANCER OR ARTHRITIS, BUT DO NOT RECEIVE TREATMENT.



A LARGE NUMBER OF HOMELESS PEOPLE WORK.

44% report they were legally employed within the last month.



DESPITE POPULAR BELIEF, MOST HOMELESS PEOPLE DON'T REMAIN HOMELESS.



40% find a home within 6 months.

RATES OF HOMELESSNESS: (per 100,000)

